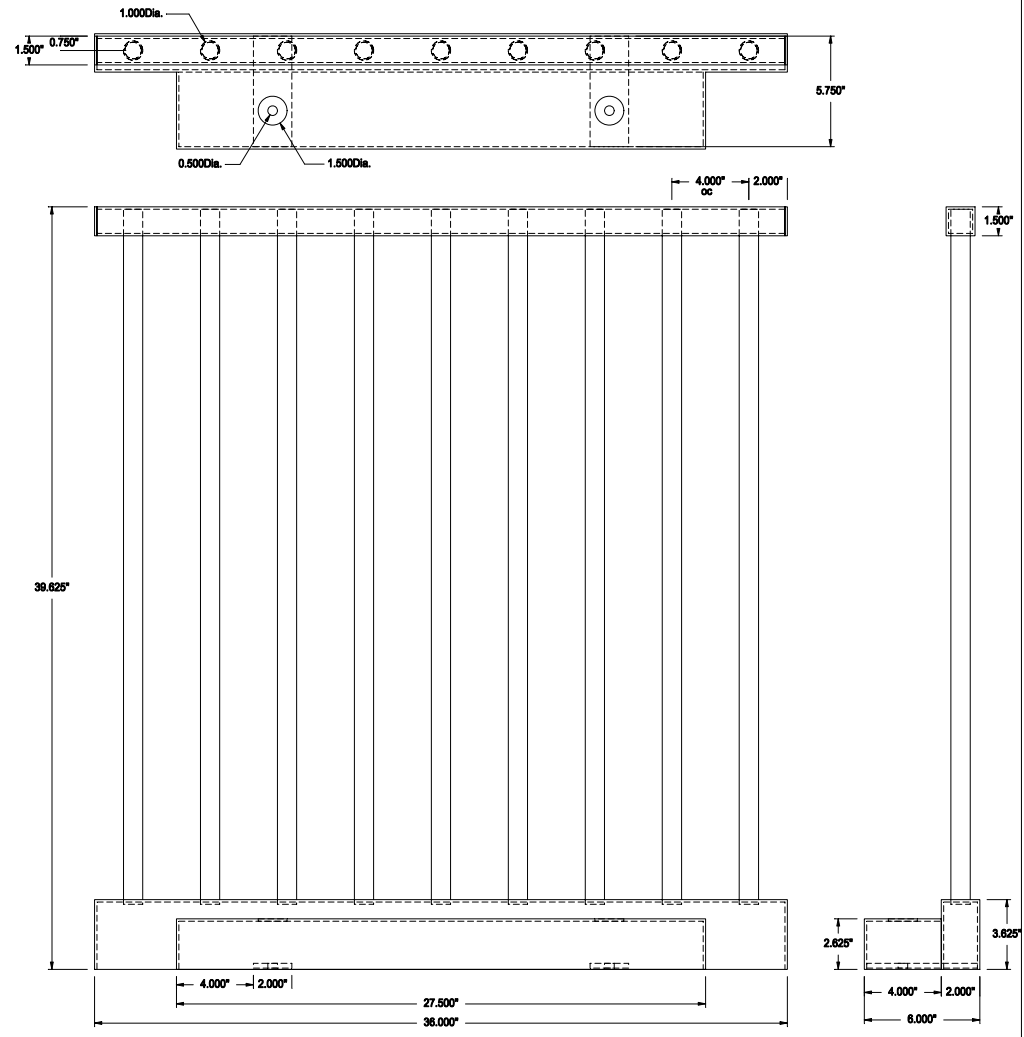
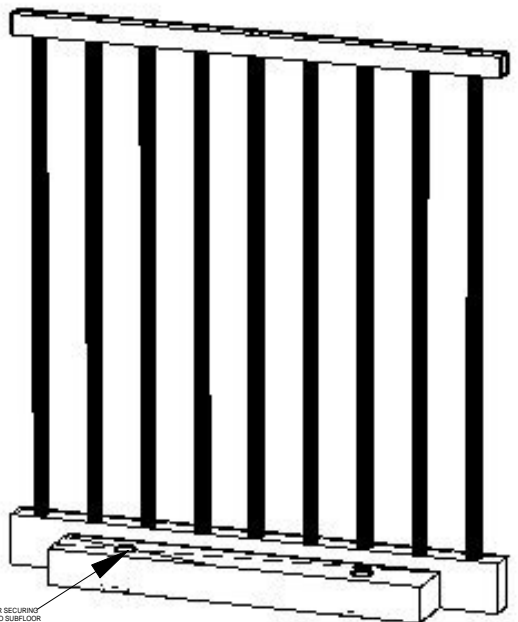


COPYRIGHT INFORMATION

REV.	DESCRIPTION	REVISIONS	DATE	APPROVED



STANDARD RAILING CONFIGURATION

1. RAILING BASE IS CONSTRUCTED FROM 16 GA. STEEL PLATE FORMED AND WELDED.
2. CARPET TILE IS TO CONTINUE FROM THE FLOOR ONTO THE RECESSED AREA OF THE RAILING BASE.
3. VERTICAL ELEMENTS ARE 1-INCH DIAMETER STEEL TUBING.
4. TOP RAIL IS 1.50-INCHES SQUARE STEEL TUBING.
5. OVERALL RAILING HEIGHT IS 39 5/8-INCHES, OVERALL WIDTH IS 6-INCHES.
6. LENGTH CONFIGURATIONS AVAILABLE IN 24-IN. AND 36-INCH.
7. RAILING SECURED TO SUBFLOOR WITH APPROPRIATE FASTENERS TO MEET ADA SPECIFICATIONS.



CUSTOM PRODUCTS & SERVICES
 6286 Claude Way E, Inver Grove Heights, MN 55076-4435
 PH: 888-444-1202 (Toll Free) or 651-452-0113 Fax: 651-452-2264
 E-mail: Info@custom-products.com
 Website: www.custom-products.com

NEXT ASSY		USED ON		APPLICATION		PARTS LIST	

UNLESS OTHERWISE SPECIFIED
 DIMENSIONS ARE IN INCHES.
 FRACTIONS ARE
 XX XX + 1
 XXX/XXX
 CAD GENERATED DRAWING
 DO NOT UPDATE MANUALLY
 APPROVALS DATE
 J.R. ECKHART 05/09/2003
 CHECKED

RAIL ASSY - 36" WIDE
POWERFLOR USA
INCORPORATED
 10000 W. WISCONSIN AVE. ST. LOUIS, MO 63143
 TEL: 314-991-1000 FAX: 314-991-1001

SIZE DRAWING NO. REV.
 C 3-RAIL 36